



Georgia Department of Transportation

# Go-Live Taskforce for Express Lanes Operations



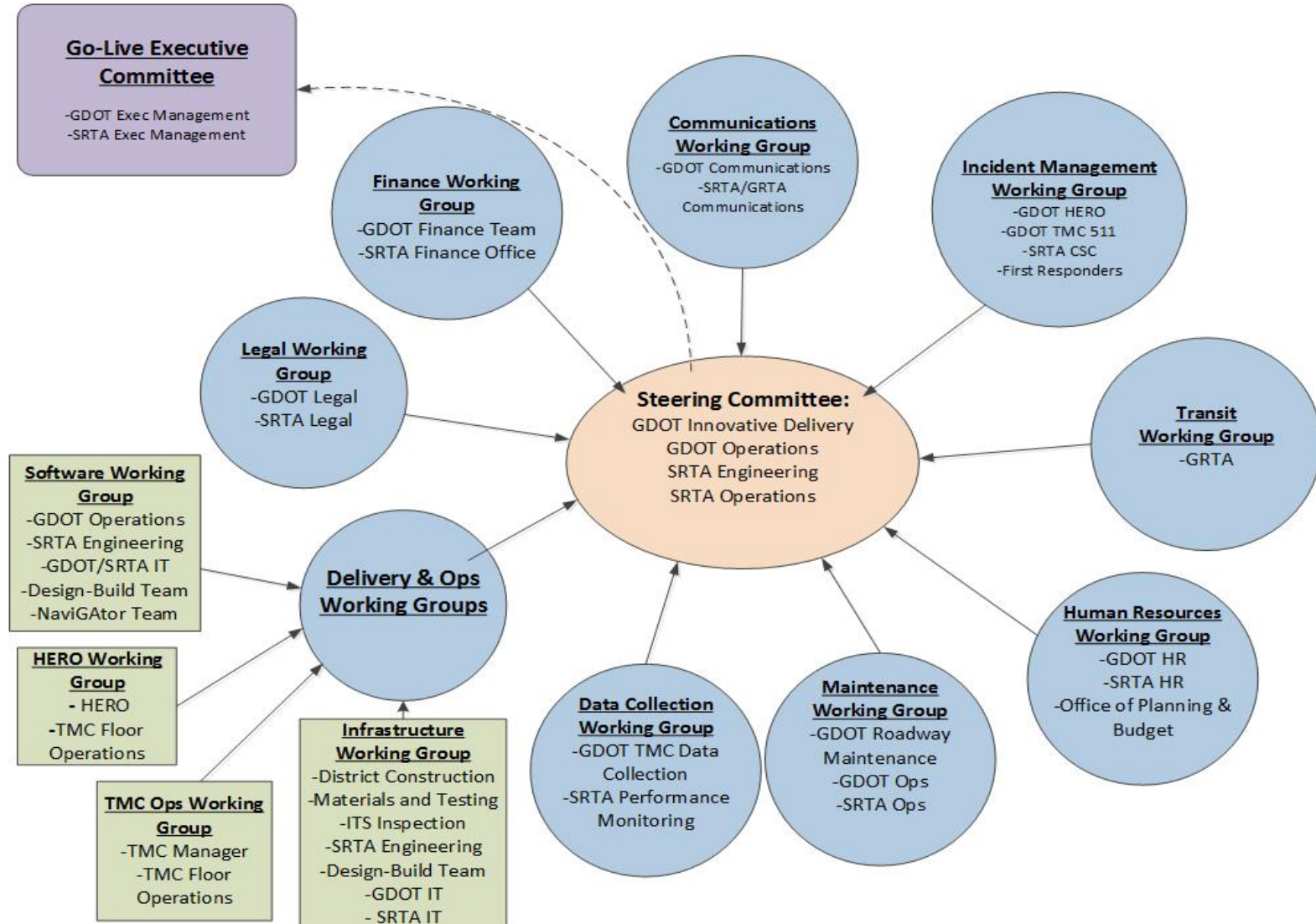
# Go-Live Taskforce – Origins

## A new type of road for Georgia:

- Barrier separated, reversible system, operated by the state
- Variable Tolling
- Delivered via Design-Build
- 2 agencies:
  - GDOT constructs, operates, maintains
  - SRTA manages dynamic pricing and toll collections



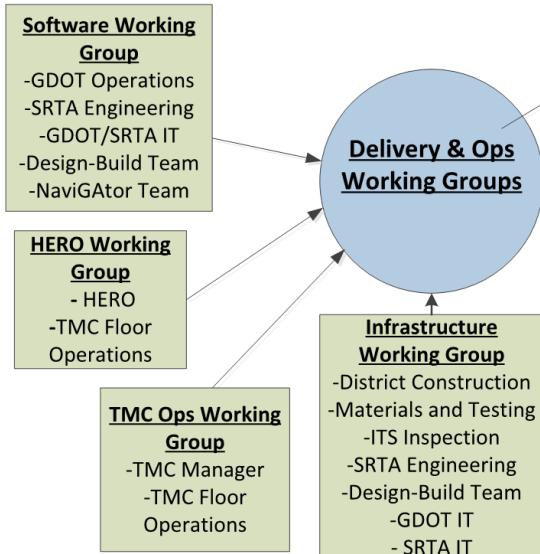
# Go-Live Taskforce



# Delivery & Operations



SRTA *and* GDOT  
Hardware *and* Software  
HERO *and* TMC





# HERO, TMC Ops, and Incident Management

## Roles include:

- Reversal workflows
- Standard Operating Guidelines
- EAG training
- All responder training
- Towing
- New Job Title Created
- TMC Floor Renovation
  - Expand & Co-Locate



# Communications

## Roles Include:

- Messaging and Outreach
- Marketing
- Groundbreaking and Ribbon Cutting

### Communications

#### Working Group

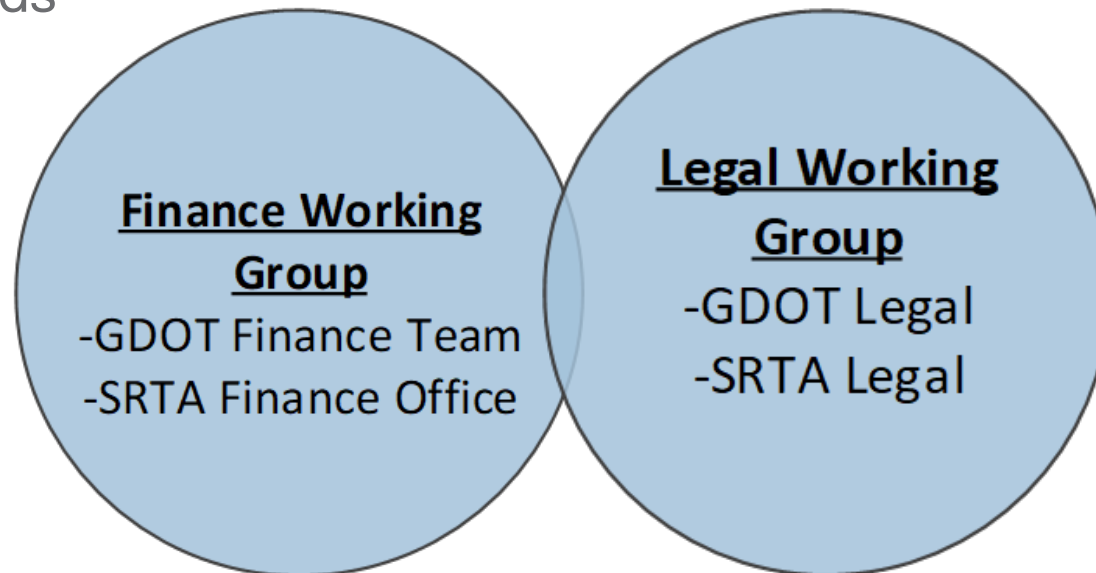
- GDOT Communications
- SRTA/GRTA  
Communications



# Finance & Legal

## Roles Include:

- Establish Intergovernmental Agreements for Operations and Maintenance
- Manage workflows for exchange of funds





# Human Resources

## Roles Include:

- Create a new position – HERO Master Operator
- Budget new positions

### Human Resources

#### Working Group

- GDOT HR
- SRTA HR
- Office of Planning & Budget





# Other needs:



## Data Collection Working Group

- GDOT TMC Data Collection
- SRTA Performance Monitoring



## Maintenance Working Group

- GDOT Roadway Maintenance
- GDOT Ops
- SRTA Ops



## Transit Working Group

- GRTA

# Gone-Live or Lessons Learned



- Start early coordination with emergency responders
- Shared calendar coordination
- Plan for software ITS testing, integration, burn-in early

# Go-Live for Different Systems

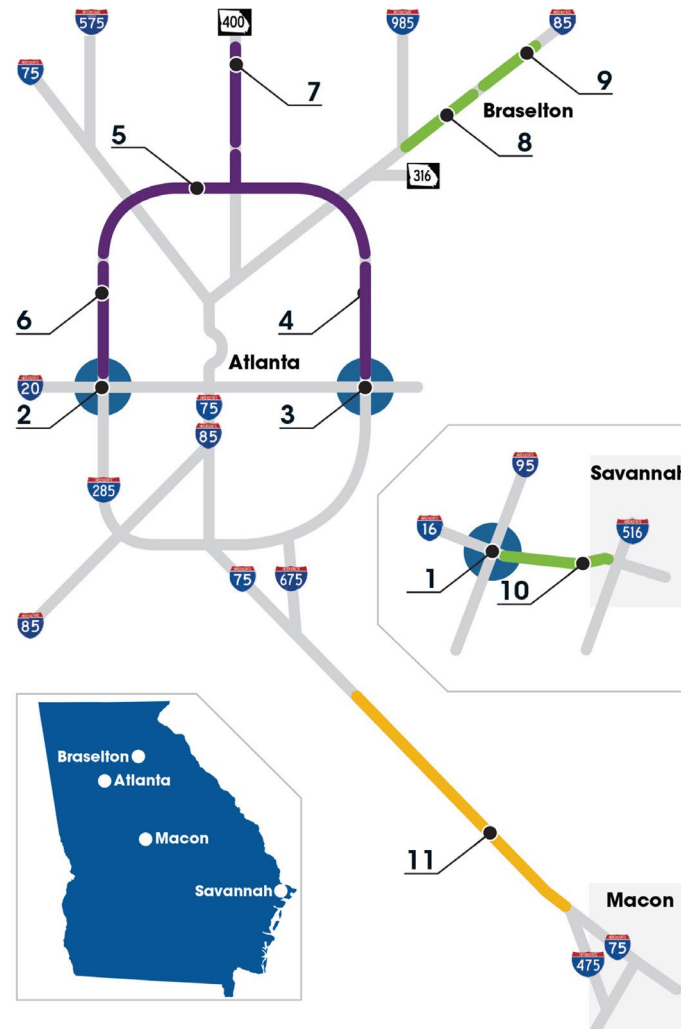
- Different contractor with different experience
- Project Characteristics
- Political/media pressure





# The Future of Go-Live

- MMIP challenges
  - Coordination of contractors
  - Overlapping schedules
  - Size and scale of Express Lane network
- What does the Structure look like going Forward?





Andrew Heath, PE  
State Traffic Engineer  
Georgia Department of Transportation  
[aheath@dot.ga.gov](mailto:aheath@dot.ga.gov)  
404-635-2828